

chapter: TRANSPORTATION IN ANIMALS AND PLANTS - 1

I. Let us read Key Words :

Heart Beat	Artery	Tissue	Blood
Vessels			
Capillary	Red Blood Cell	Platelets	Plasma

II. Have you ever see this? What is the name of it and what is the use of it?

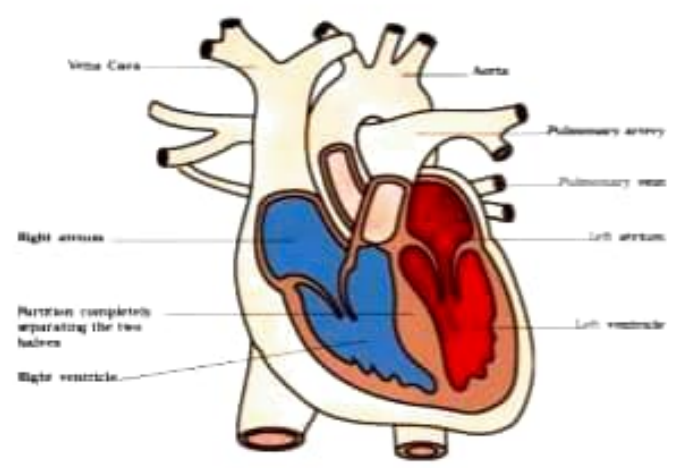


→

→

→

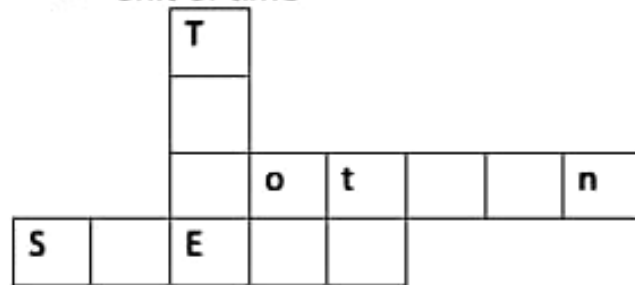
III. Observe the picture and label the parts as shown:



Chapter : Motion and Time

keywords:

- Speed (5 across)
- Time (4 Row) period
- Uniform motion (5 across)
- Unit of time



Fill the boxes with suitable letters...



- Think about this picture?



- Draw the picture and fill with colours

chapter: TRANSPORTATION IN ANIMALS AND PLANTS - 2

I. Let us read Key Words :

Ureter

Urinary Bladder

Xylem

Phloem

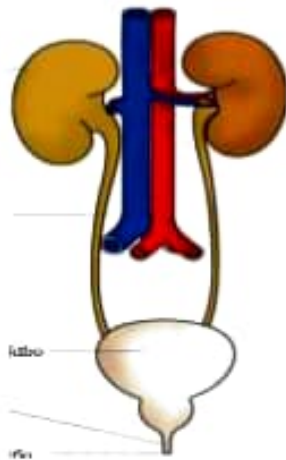
Root hair

Excretion

Uric Acid

Sweat

II. **ANSWER THE FOLLOWING:**

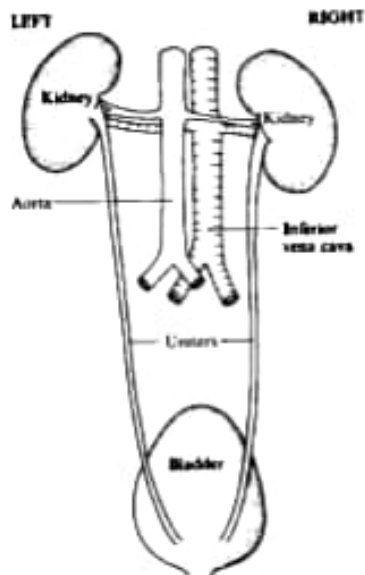


Name

Location

Function

Draw and color the diagram



Chapter: Motion

keywords:

Motion

Time

Bar graph

Graphs

Non-uniform motion

Oscillation

Simple pendulum

Rearrange the letters using keywords

RAGBPHRA

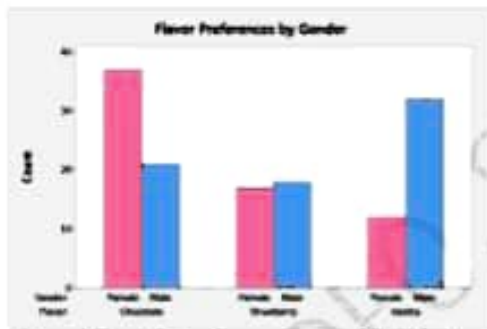
--	--	--	--	--	--	--	--

OMTINO

--	--	--	--	--	--

METI

--	--	--	--



Identify this diagram with help of key words ?



A person's motion



A bicycle's motion



A car's motion



Train's motion



Write the activities seen in the picture?

